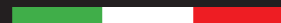


officine  
**BRUGNETTI**

Via Polveriera, 37/39  
20026 Novate Milanese MI  
Tel. +39 02 3546404  
[www.officinebrugnetti.com](http://www.officinebrugnetti.com)



officine  
**BRUGNETTI**

1947



---

## JOURNEY THROUGH HISTORY

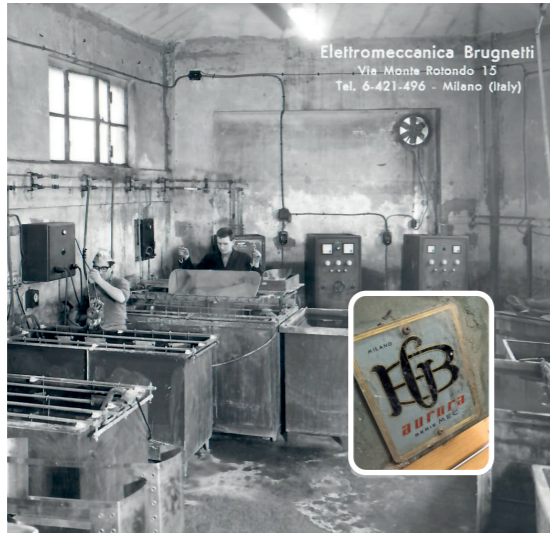
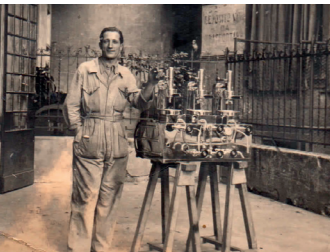
In the early 1950s, post-war Italy was in the throes of a rebirth. The coffee machine becomes a real socialising tool.

Bars and meeting places were born where people could converse pleasantly in front of a good cup of coffee, which became a distinctive symbol of our country in the world.

Coffee tasting fostered the birth of coffee machine production activities that continually evolved in order to obtain a better coffee in the best possible way and in the shortest possible time.

---





In 1947, Giuseppe Brugnetti in a small warehouse on the outskirts of Milan, after having been employed by a coffee machine factory since 1926, decided to found "Officine Brugnetti" and started producing coffee machines under the name "Aurora" and ice crushers, blenders, juicers and mixers under the name "Brugnetti".

After realization of the first coffee machines with a vertical body with steam/water groups and the use of lever groups, the company "Officine Brugnetti" presented itself on the market with the "Panoramica" coffee machine model still



---

recognised and in great demand on the market today for its beauty.

Later, this model is equipped with hydraulic units with dosing volumetric; initially with 2 different doses and later with the multidose unit that allows up to 10 different doses. In the 1960s, the first dispensing machines were made that through the installation of a rotary pump allowed for the pressure necessary for the preparation of coffee first created by hydraulic groups that required an exaggerated consumption of water or by lever groups from the excellent yield but slow and tiring for the user.

---



---

In 1964, the new "GB10" dispensing series equipped with a volumetric pump and with manually operated groups controlled by solenoid valves.

Operation that, in 1976, will be replaced by the volumetric combining mechanical with electronic technologies and will offer the possibility for "Officine Brugnetti" to enter foreign markets.

After the death in 1980 of the founder Cav. Giuseppe Brugnetti, the company was led by his son Paolo who, thanks to his business capacity manage, created a dense network

---



of distributors and external collaborators even beyond the Continent.

The company soon is able to export more than 97 percent of its production.

The name "Aurora" is replaced with the name "Brugnetti" to better identify the familiarity of the production activity and ensure the quality of the Italian product as a historical brand recognized in the World with participation in International Fairs and Exhibitions of the sector.

---

Today the company is run by the third generation of the Brugnetti's family, and boasts as now very few companies in the industry, still the presence of its founding partners at the helm.

Through a process of selection of raw materials, strictly all Italian, the "Officine Brugnetti" is able to produce its espresso machines still in an artisanal way adapting to the market while keeping alive the tradition of true Italian espresso bar.



Giulia

*Electronic programming for four levels of coffee*

*Manual push button for coffee*

*Two manual steam tap at fast delivery*

*Water wand with programmable dosing*

*Built-in volumetric pump*

*Standard electronic automatic level in boiler*

*Electric heating*

*Temperature control by pressure switch*

*Led light on back side panel*

	<b>GIULIA 1 GROUP</b>	<b>GIULIA 2 GROUPS</b>	<b>GIULIA 3 GROUPS</b>
Boiler capacity	lt. 5	lt. 10	lt. 17
Heating element	Watt 2400	Watt 3000/Watt 4000	Watt 6000
Weight	Kg. 40	Kg. 55	Kg. 75
Dimensions	43Lx50Hx56P	63Lx50Hx56P	86Lx50Hx56P
Accessories on request of customer: shot-timer - stainless steel protection group grill - wood filterholder and steam tap knob			
Available colours (lateral panel): matt ○ white ● black ● red			

*Possibility of colors on customer request (price to be defined according to color and quantity)*



Giulietta



*Insulated hot water pipe*

*Insulated steamer pipe*

*Electric heating with adjustable automatic pressure switch*

*Manometer double (1 for boiler pressure and 1 for water pressure)*

*Volumetric pump*

*Electronic control levels water boiler and tank with beep alarm*

*Ready for connection to water mains network*

*Led light on back side panel*

#### **GIULIETTA**

Boiler capacity	lt.3
Heating element	Watt 2000
Water tank capacity	lt.2,8
Weight	Kg. 29
Dimensions	37Lx43Hx42P

Available colours (lateral panel): matt  white  black

*Possibility of colors on customer request  
(price to be defined according to color and quantity)*



Giulia Compact

---

*Programming of 4 volumetric coffee dosages per group*  
*Manual coffee delivery key*  
*Steam draw-offHot water draw-offIntegrated volumetric pump*  
*Automatic water level control in boiler*  
*Electrical heating*  
*On request connection to water mains network or/with tank*  
*Visual water shortage alarm*

**GIULIA COMPACT**

Boiler capacity	lt. 7
Heating element	Watt 2400
Water tank capacity	lt. 3
Weight	Kg. 45
Dimensions	50Lx48Hx48P



Viola

---

*Chromed brass brewing group and filter holder*

*Insulated hot water pipe*

*Insulated steamer pipe*

*Electric heating with adjustable automatic pressure switch*

*Removable water tank*

*Full stainless steel body*

*Vibration pump*

*Electronic control levels water boiler and tank*

*Ready for connection to the water mains network by "kit" supplied separately*

<b>VIOLA</b>	
Boiler capacity	lt. 1,4
Heating element	Watt 1500
Water tank capacity	lt. 3
Weight	Kg. 25
Dimensions	26Lx45Hx43P



We introduce you...

*Independent groups*

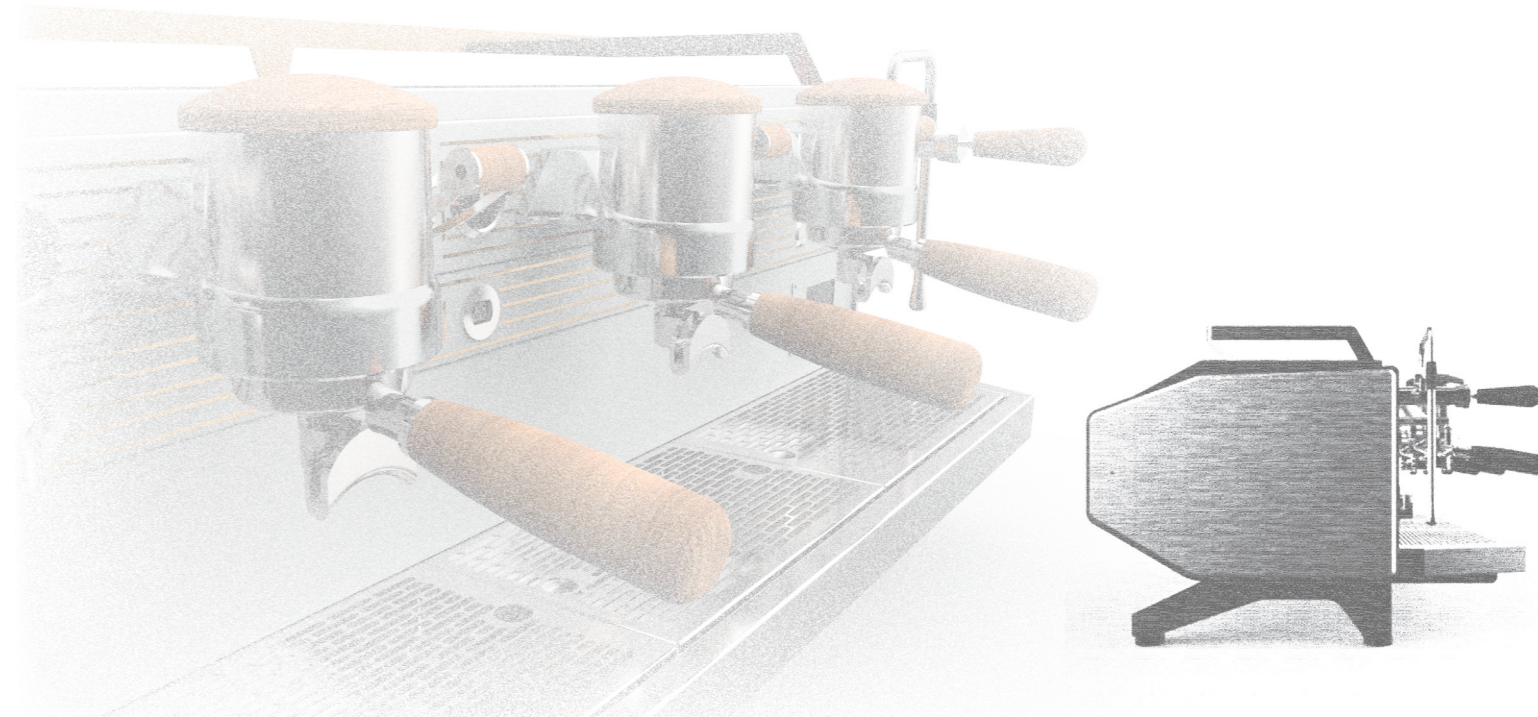
*External volumetric pump*

*Optional : volumetric pump for each group*

*Display for function and programming*

*Insulated steam pipe*

Boiler capacity steam/hot water	lts. 10
Boiler's heating element steam /hot water	Watts 4000
Single heating element boiler's coffee capacity	Watts 1000
Single capacity for each coffee boiler	lts. 1
Net weight	Kg. 80
Dimensions	82Lx49Hx55P



---

## Accessori



Joystick in walnut wood



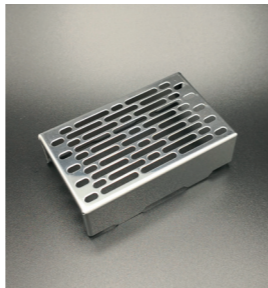
Protection mask



Walnut wood flower's  
steam valve



Filterholder in walnut wood



Compensation grill

